



Reigate walk, Corby



**STUART
CHARLES**
ESTATE AGENTS

£179,950

Offered FOR SALE with NO CHAIN is this three bedroom family home in the popular Kingswood area. Situated a short walk away from multiple schools, shopping areas and green spaces an early viewing is recommended to avoid missing out on this home. The accommodation comprises to the ground floor of an entrance hall, W.C, lounge, kitchen/diner, utility room and sun room. To the first floor are three bedrooms all with fitted wardrobes and a three piece wet room. Outside to the front is a low maintenance paved area. To the rear a large patio area leads up to a raised decking area and to a low maintenance gravel area to the rear. Gated access leads to car hardstanding and communal spaces.

- NO CHAIN
- OPEN PLAN KITCHEN/DINER
- THREE BEDROOMS WITH BUILT IN WARDROBES
- CLOSE TO MULTIPLE SCHOOLS
- LOCATED ON MAIN BUS ROUTES
- LARGE LOUNGE
- WC AND UTILITY ROOM
- WALK IN SHOWER ROOM
- CLOSE TO SEVERAL SHOPS AND MORRISONS
- CLOSE TO GREEN SPACES AND PLAY AREAS

Entrance Hall

Entered via a double glazed door, radiator, stairs rising to first floor landing, doors to:

W.C

Fitted to comprise a two piece suite consisting of a low level pedestal, low level wash hand basin, wall mounted boiler, double glazed window to front elevation.

Lounge

15'3 x 12'0 (4.65m x 3.66m)
Double glazed window to rear elevation, radiator, space for fire, Tv point, telephone point. door to:

Kitchen/Diner

16'0 x 14'9 (4.88m x 4.50m)
Fitted to comprise a range of base and eye level units with a single sink and drainer, space for cooker, space for automatic washing machine, double







glazed window to front elevation, double glazed door to sun room, door to:

Sun Room

Radiator, double glazed door to garden.

Utility Room

With space for an automatic dryer and free standing fridge/freezer.

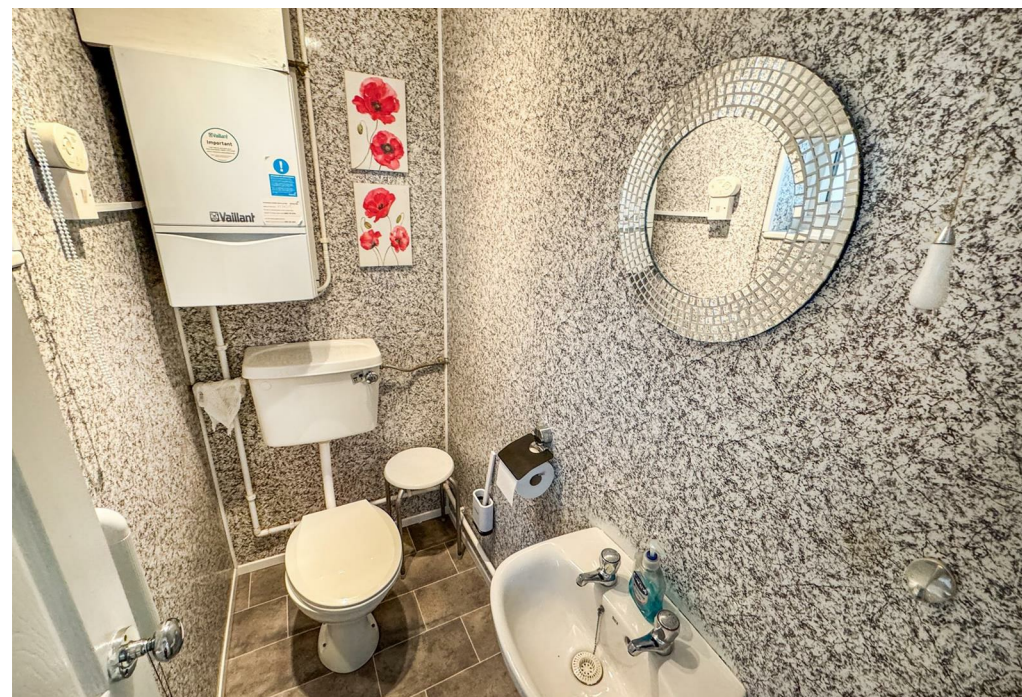
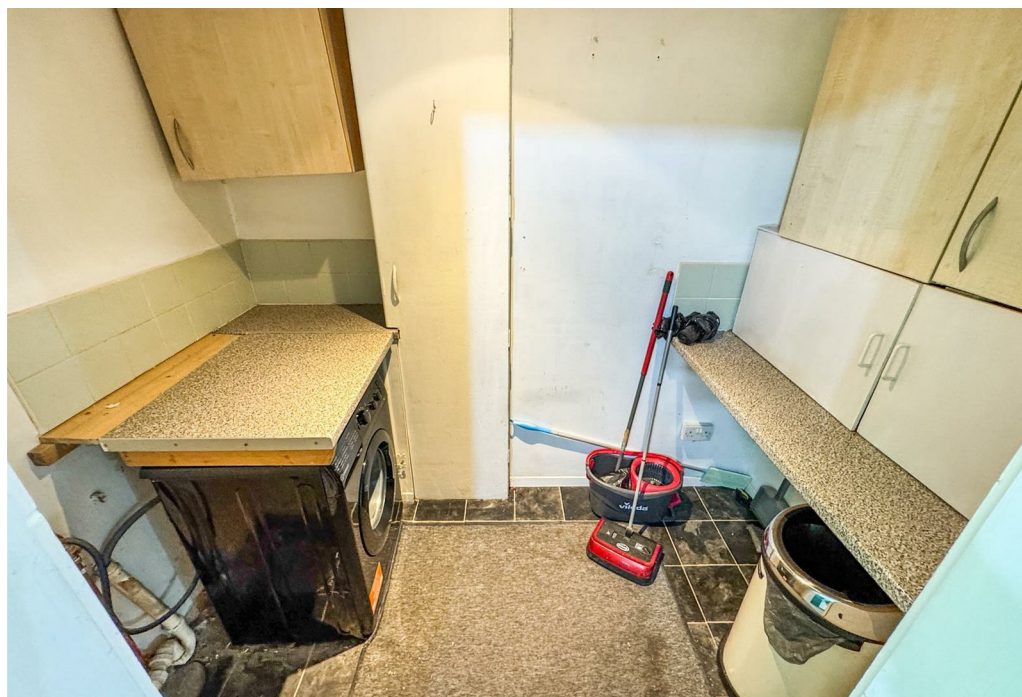
First Floor Landing

Loft access, stairs rising from ground floor, doors to:

Bedroom One

16'9 x 9'11 (5.11m x 3.02m)

Double glazed window to rear elevation, radiator, built in wardrobes.





Bedroom Two

12'4 x 8'5 (3.76m x 2.57m)

Double glazed window to rear elevation, radiator, built in wardrobe.

Bedroom Three

12'4 x 6'6 (3.76m x 1.98m)

Double glazed window to rear elevation, radiator, built in wardrobe.

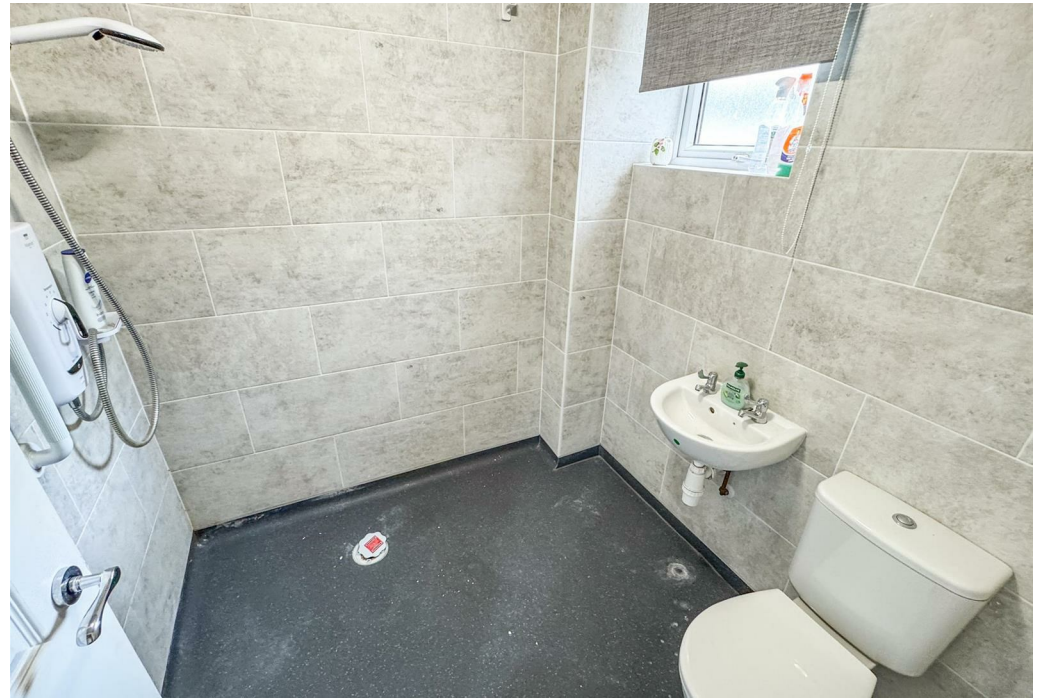
Wet Room

6'3 x 6'2 (1.91m x 1.88m)

Fitted to comprise a walk in wet room with electric shower, low level pedestal, low level wash hand basin, radiator, double glazed window to front elevation.

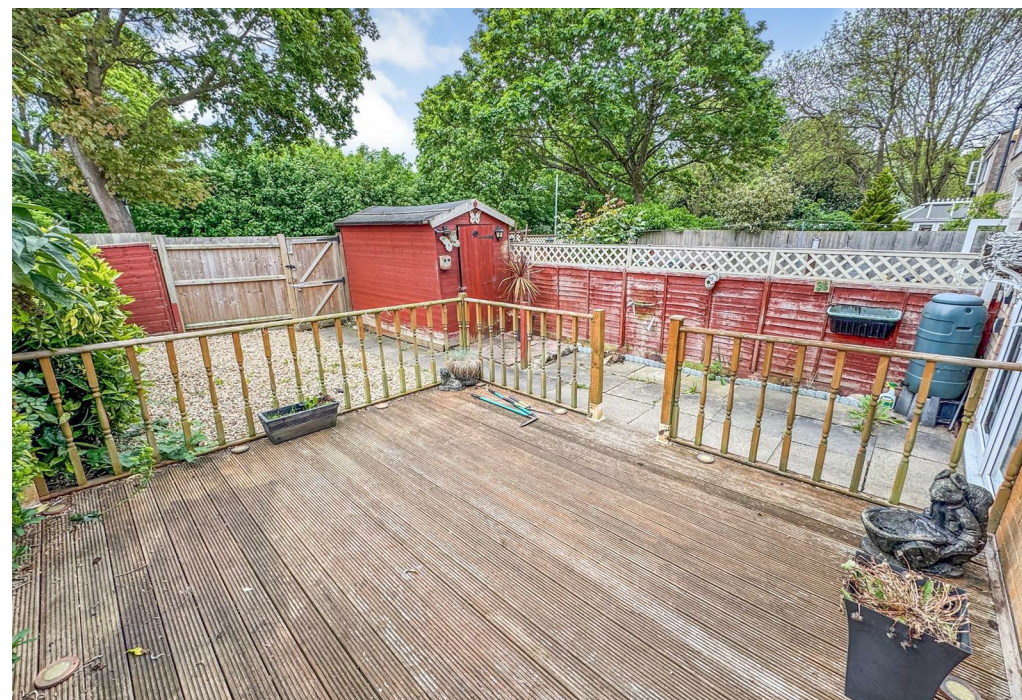
Outside





Front: Low maintenance paved area.

Rear: A large patio area leads up to a raised decking area and to a low maintenance gravel area to the rear. Gated access leads to car hardstanding and communal spaces.

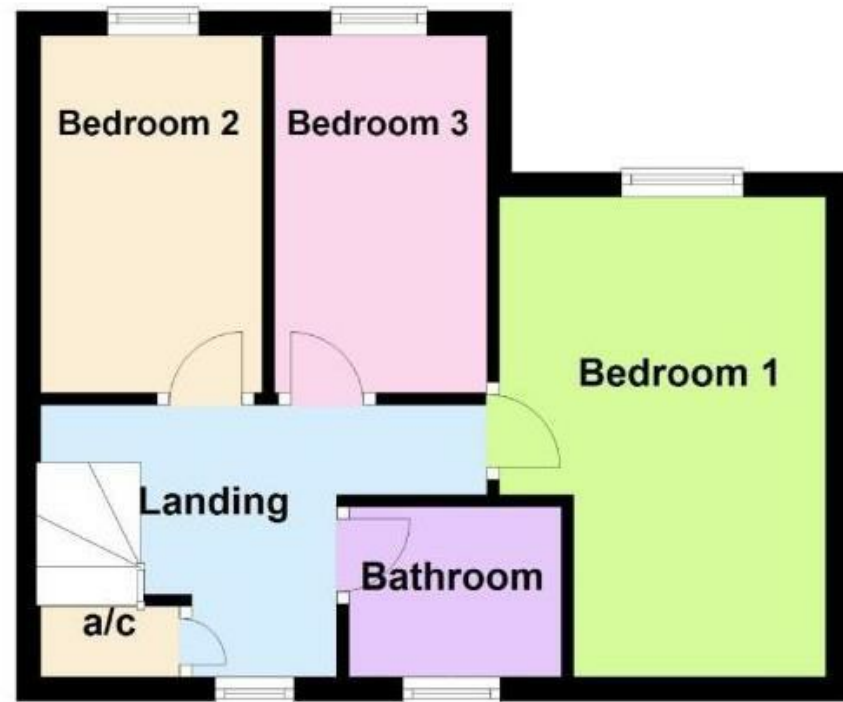




Ground Floor



First Floor



Floor plan not to scale - for guidance purposes only.
Plan produced using PlanUp.

